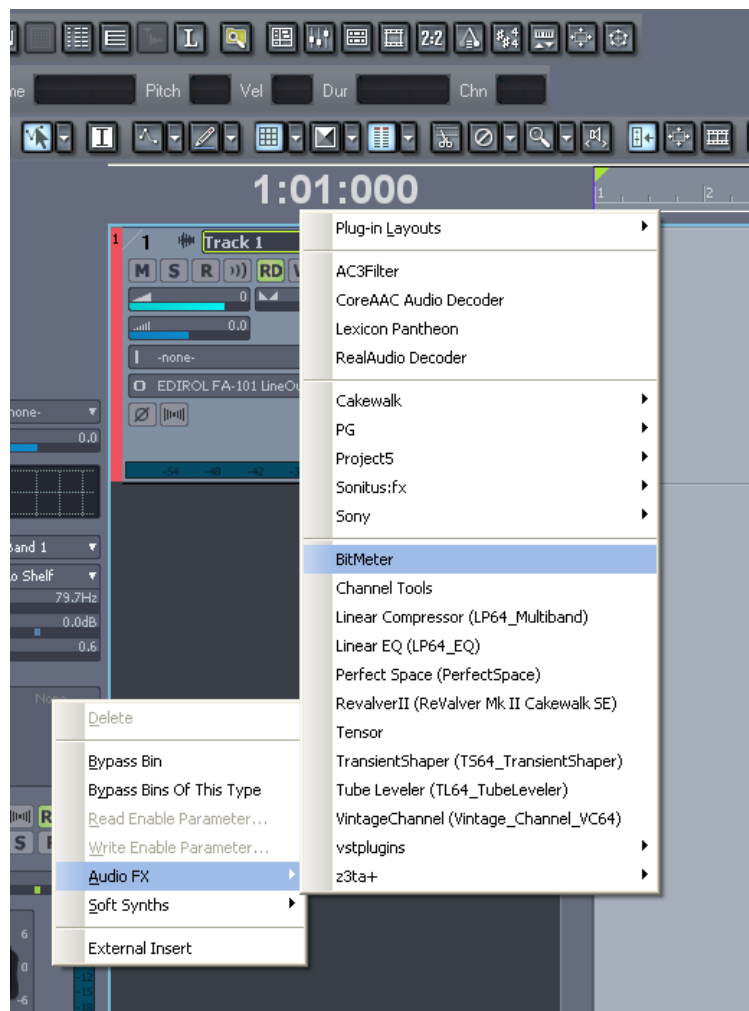


Organising your Effects Plugins in SONAR

After spending a bit of time with the new Cakewalk by Roland VS-700 system I came across a feature that made effects selection more efficient. Existing Cakewalk users may recognize the following layout.



It's a bit all over the place and sure, you do get used to it after a while but there is a better way. How about instead of organizing effects by company or format, we organize them by effect type and even go as far as prioritizing the effects we use the most so that they appear at the top of the list.

Plan your Effect Categories

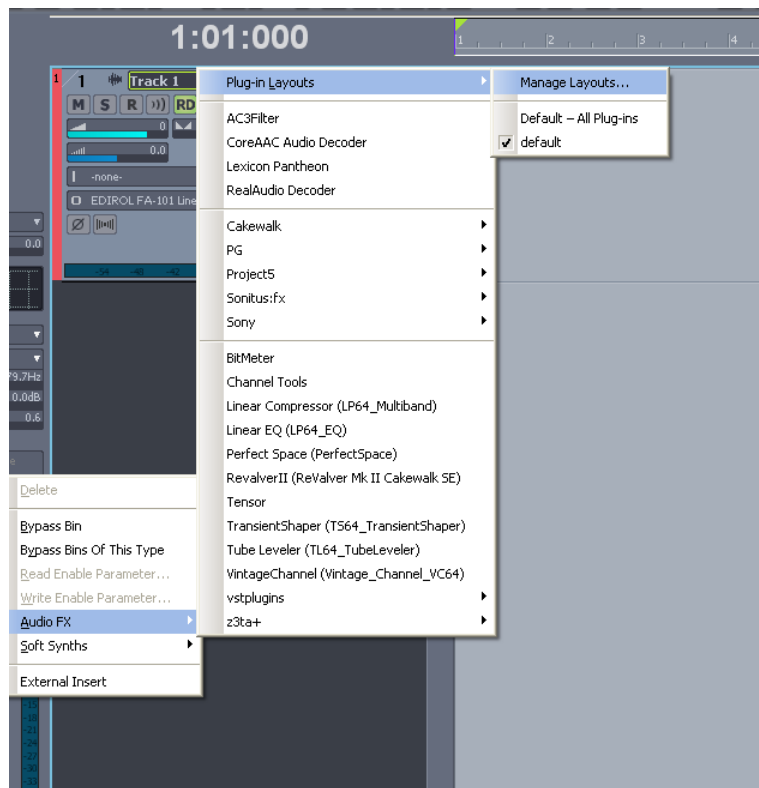
Before you commence updating your plug-in layout it would be a good idea to think about how you want to organize your effects. Think about what categories you want and in what order you want them in. I organized my categories as follows;

1. Dynamics / EQ
2. Reverb
3. Delay / Mod
4. Special
5. Mastering

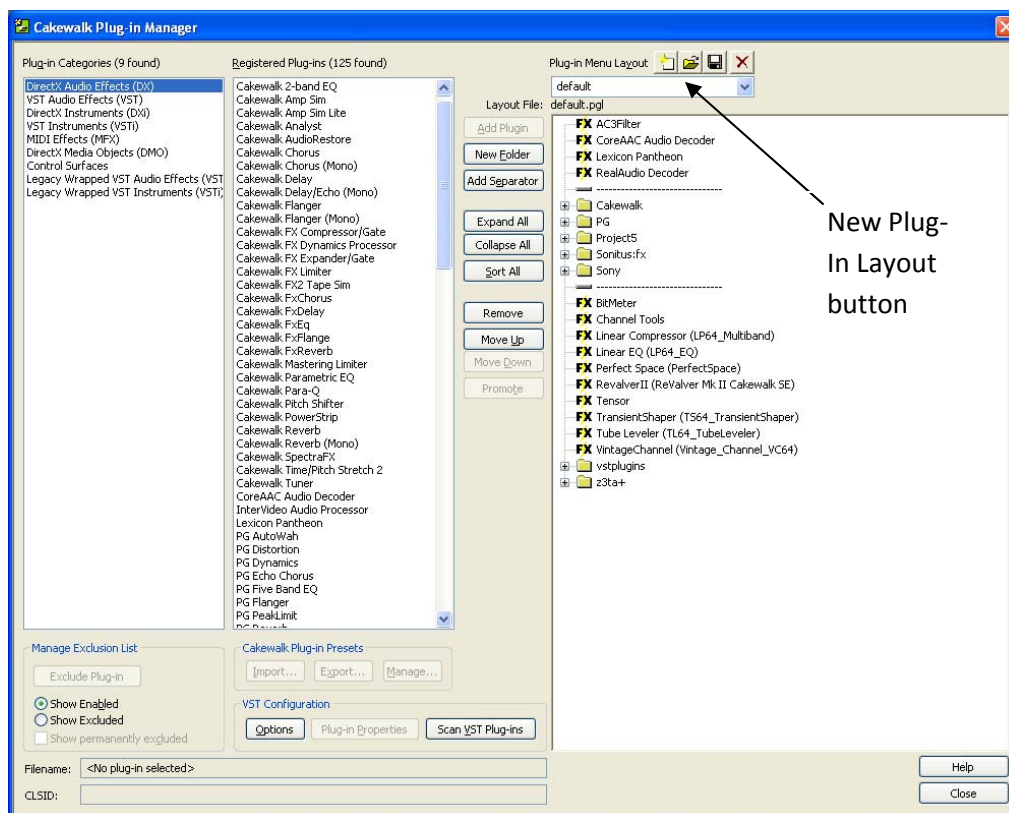
Of course, you may want to make up your own, but this ties in with how I work.

Create a new Layout

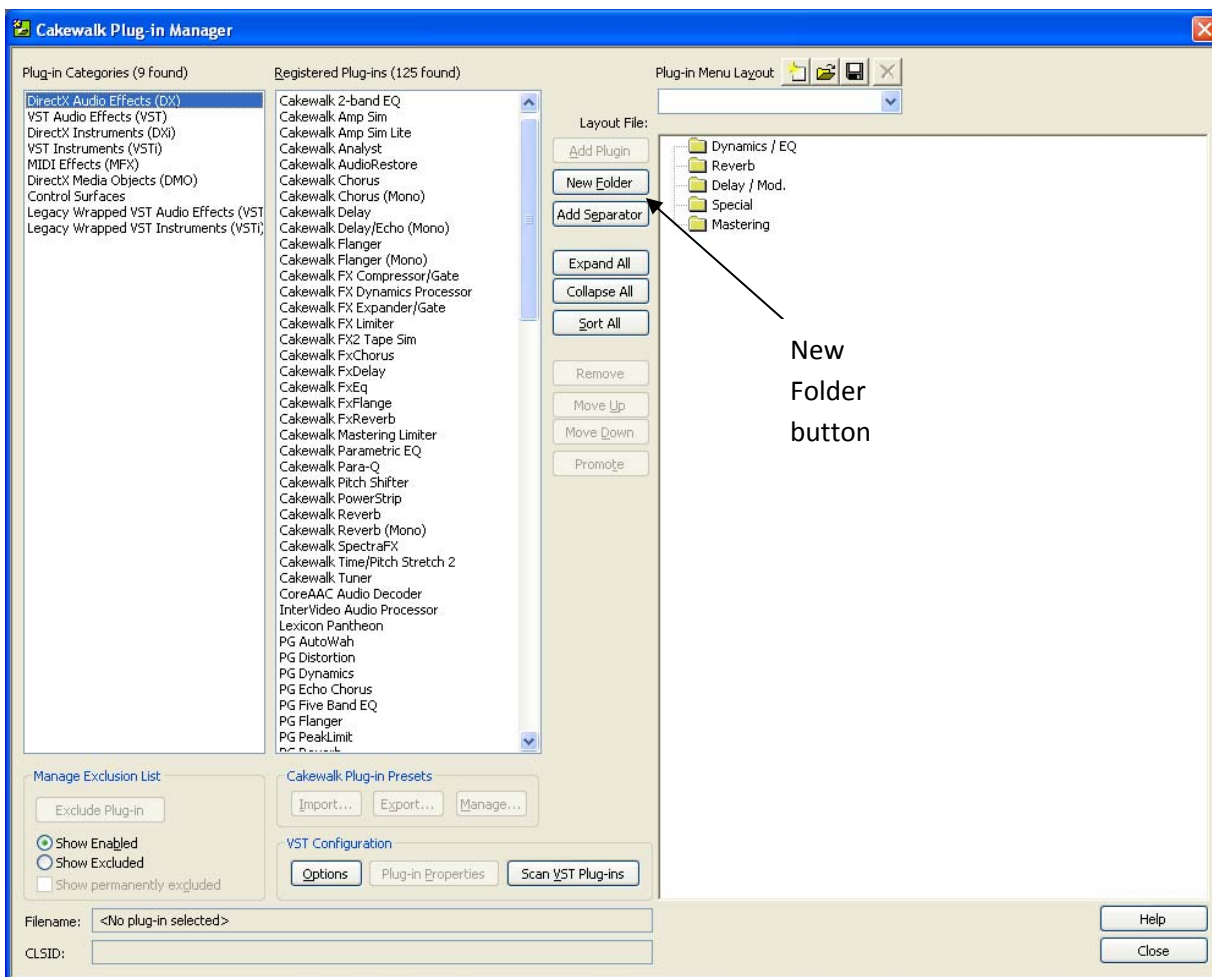
Right-click the FX Bin and select Audio FX / Plug-in Layouts / Manage Layouts. This will open the Cakewalk Plug-In Manager.



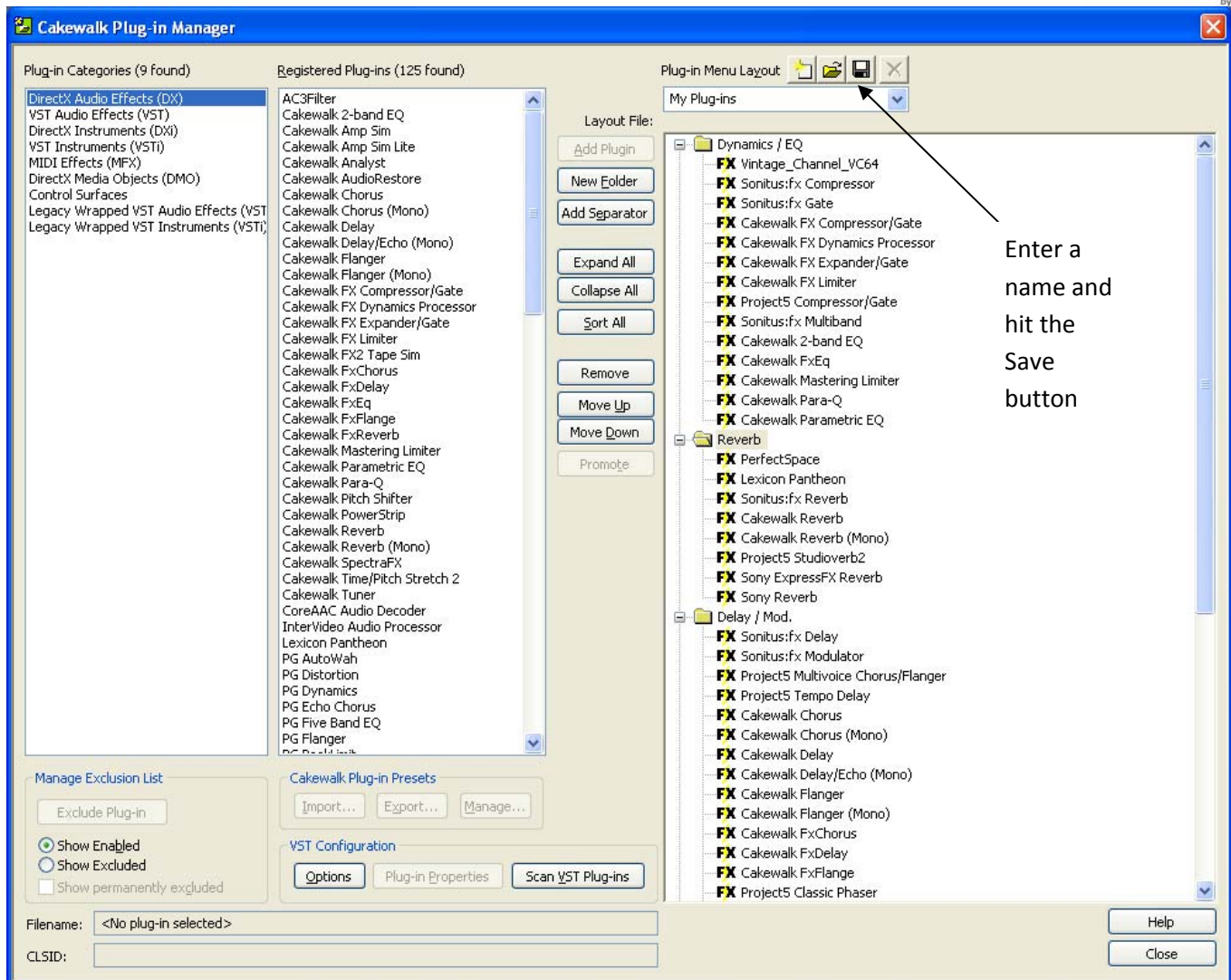
Click the New Plug-In Layout button and the right pane will become empty. Now we can start creating our own structure.



Click the New Folder button found between the right and centre panes. A folder icon will appear in the right hand pane and you will be able to name it. So name it as the first category you created in the previous step. Repeat this until you have a folder listed for each category you have specified. The Cakewalk Plug-In Manager should now look something like this



First of all, select your DirectX Audio Effects so click on it in the left hand pane. Now click on the first folder you have created in the right panel (in my case, it is Dynamics / EQ. Now select the effects in the centre pane that you wish to assign to that category (now would be a good time to tell you to be selective and only include the ones you want to use. Don't select the guff that you have been acquiring off technology magazine DVD's that you never get round to using). Once you have copied the effects you want from the DX and VST Plug-In categories you should have a screen that looks like the screenshot below. Notice how I also was able to have my favourite plug-ins at the top of each category and the ones I only occasionally use at the bottom. Simply just drag and drop the effects until you achieve your desired order.

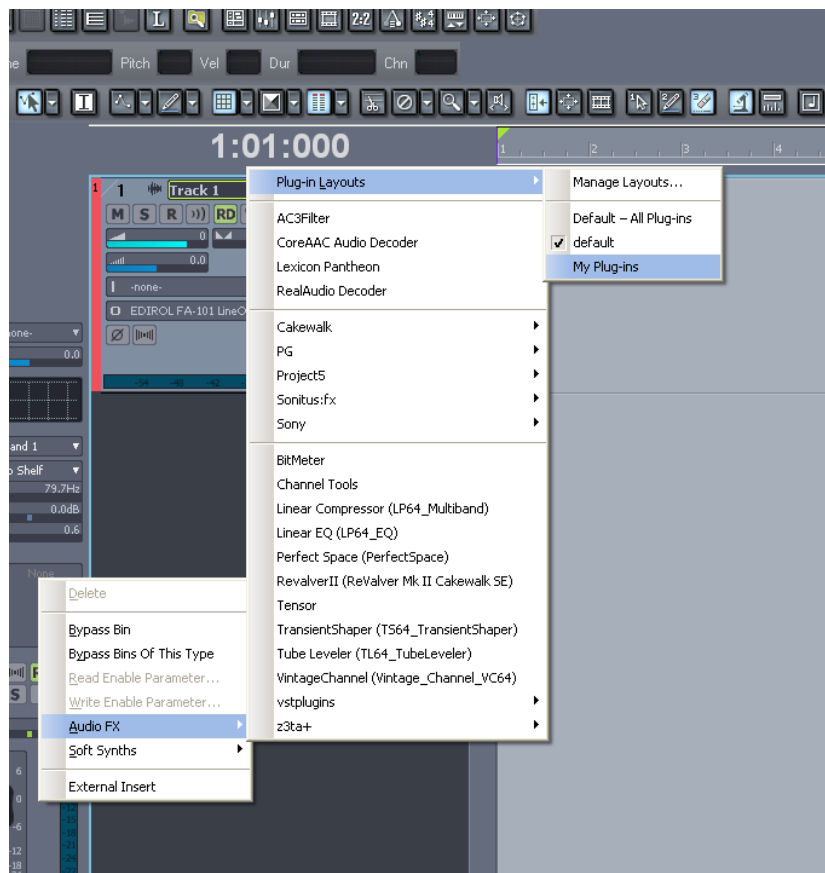


Enter a name and hit the Save button

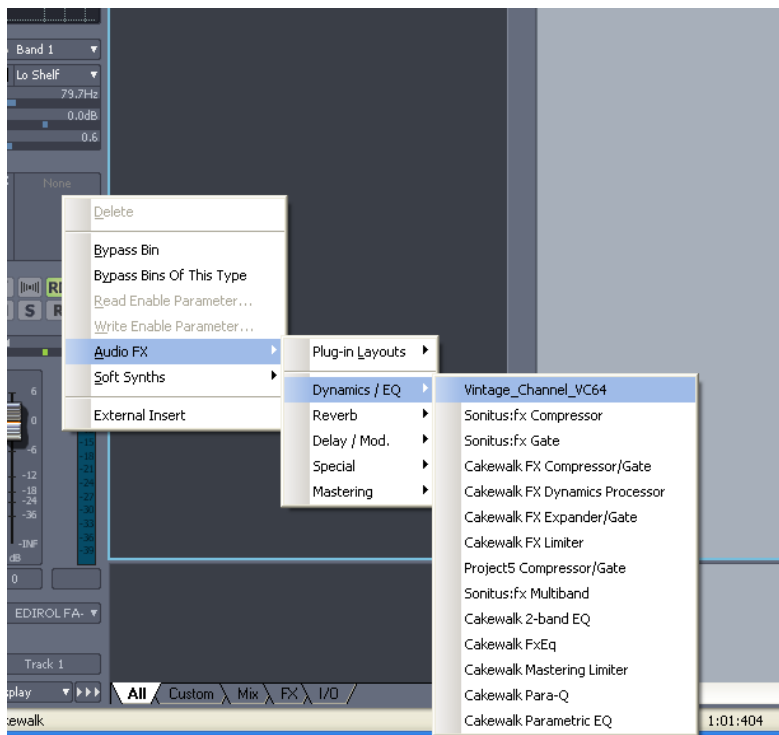
Now you need to save what you have done so enter a suitable name in the Plug-in Menu Layout Field and click the Save Button. A Save dialogue window will appear so just confirm the file name and hit Save. Once you have done this you can close the Cakewalk Plug-in Manager.

Using your new Plug-in Configuration

First of all, you need to select your newly created configuration. You can do this by Right-clicking the FX Bin and selecting Audio FX / Plug-in Layouts and selecting the Plug-in configuration you created.



Now when you click on the FX Bin and select Audio FX you will see this screen.



This means that I can get to the effect I want a lot more quickly. If you are the proud owner of Cakewalk by Roland's VS-700 V-Studio then you will appreciate the speed that you now able to select your desired effect from the Controller. The image

below taken of the VS-700 Controller depicts the LED display when you enter Enable Plug-in Mode. You can clearly see the current category and effect which can be easily selected with rotary knob's 1 and 3.



Spending time preparing your effects this way pays dividends as it improves your work flow even further thus enabling you to work quicker and more efficiently. This will then lead to an even more enjoyable SONAR experience.