

Using the Analyst Plug-in

I use the AN-879 Analyst plug-in a lot for checking the frequency spectrum of my mixes. By listening to the audio and observing the animated movement of the frequency display I can quickly identify the areas of the frequency spectrum I need to work on to produce a more balanced mix. I have found that the best place to put the Analyst plug-in is on the bus you set up as the Default Bus as an insert effect. All sound passes through this bus so by muting or soloing tracks or busses, not only can I check the entire mix but individual tracks or busses too.

Another good trick is to Tab Enable the plugin so that it always appears at the bottom of the Track Screen. This makes it easy to use especially when you are comparing tracks with the solo and mute functions. It also stays in view when you are operating EQ and Dynamic Processors to giving you instant visual feedback when you perform edits with these kind of effect plug ins.

The screenshot shows the Cakewalk software interface. On the left, a track list includes Kick Cond, Snare, Tom, Hats, OH L, and OH R. The Master bus is selected. In the center, the 'Track Eq [Kick Cond] - killer just drums' window is open, showing a frequency response curve and a table of EQ bands. On the right, the 'AN-879 ANALYST' window is open, displaying a frequency spectrum graph with a red line indicating the current frequency response. A yellow arrow points to the 'Cakewalk Analyst [Master]' label at the bottom of the interface.

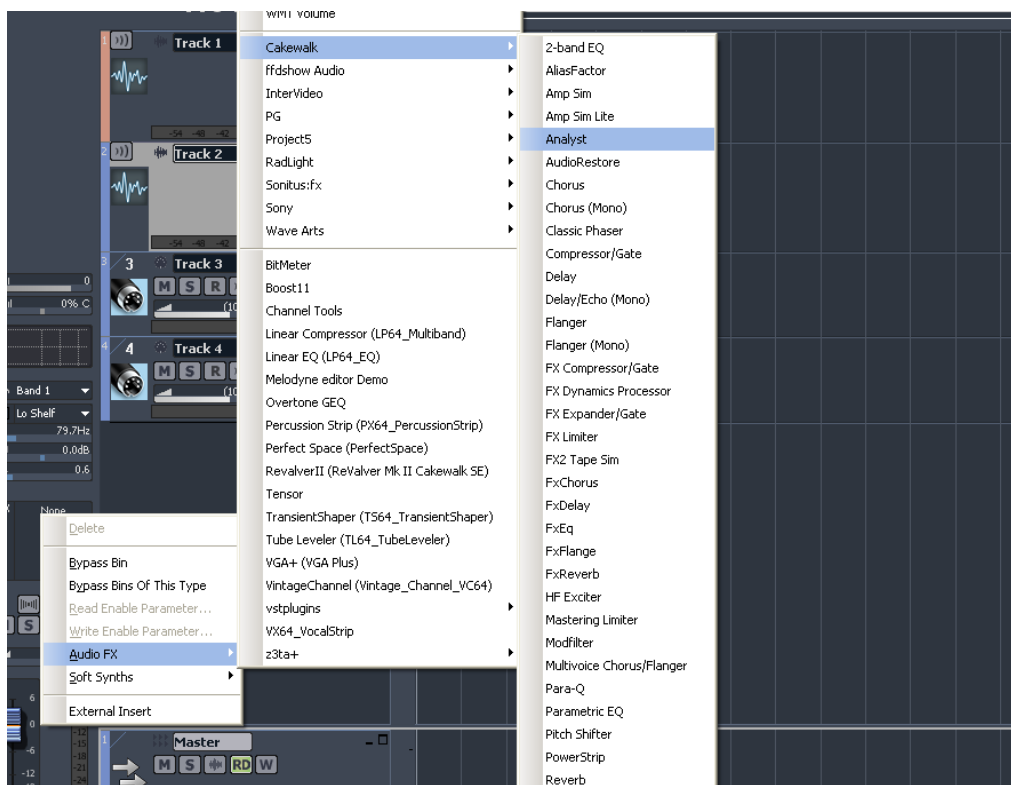
Band	Filter	Freq	Q	Gain
1	Low Shelf	18 Hz	1.6	-4.4 dB
2	Bandpass	1039 Hz	4.3	-8.6 dB
3	Bandpass	3140 Hz	4.9	2.3 dB
4	Bandpass	10460 Hz	2.0	0.0 dB
5	Bandpass	4600 Hz	0.6	0.0 dB
6	Bandpass	15000 Hz	0.5	0.0 dB

In this example, the Track Kick Cond has been soloed and the EQ plug in for that track has been opened. Because the Analyst has been tabbed, I can conveniently view the results of my editing.

The Analyst plug in is tabbed

Ok, so let's set this up...

Open up an empty project and assuming that you have made no changes to the default project template, select the Master Bus. From the FX Bin of the Master Bus, select the Analyst plug in which normally resides in the Cakewalk Folder.

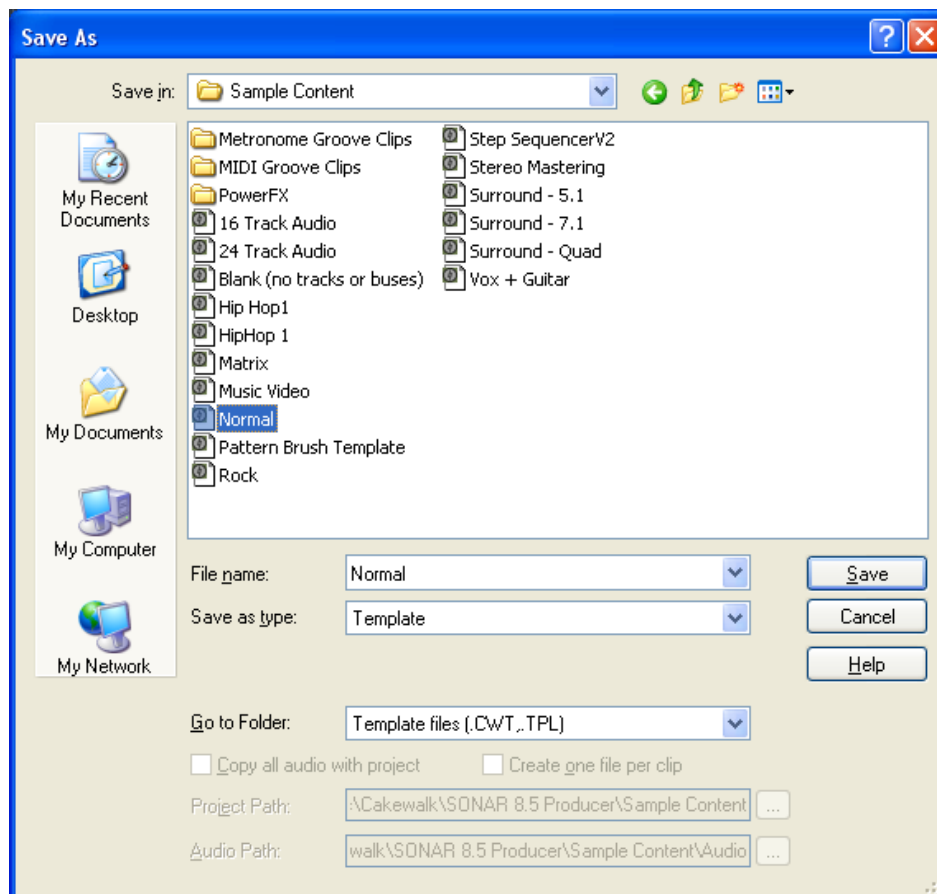


The Analyst plug in should now appear as a floating window but we want it to appear as a tab so click on the icon at the top left of the Analyst window and select Enable Tabbed from the menu.



Now you should see it sitting nicely at the bottom of your Track View. Now you are ready to use the Analyst. To find out more about its operation, click anywhere on it and press the F1 key to open its Help File.

If you find this way of working useful then you may want to save it as a Normal Template so that it always opens this template as the default template every time you start a new Project. Simply select FILE / SAVE AS to bring up the Save As Screen.



Set the Save as type to Template and Go to Folder to Template files (.CWT,.TPL). Click on Normal from the resulting list of files and that will become the file name. Click Save and select the option to overwrite the file. From now on the Analyst will always appear as a Tab in the Master Bus every time you start a new Project.