

Customizing your PRV Tools

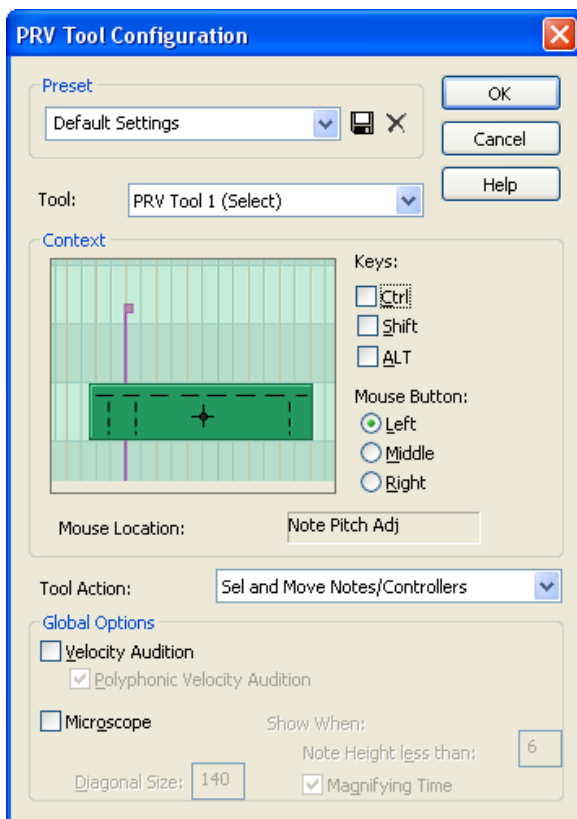
SONAR offers a very comprehensive range of MIDI creation and editing commands, all of which can be operated with a mouse. They are so comprehensive that they are spread over three Tools; Select, Draw and Erase, each of which can be selected from the Toolbar.

But there are times when I am working on developing a musical phrase where I only need a few MIDI commands and also, the act of selecting one of the three Tools from the Toolbar even though it takes a fraction of a second; gets in the way of my creativity. Fortunately, these Tools, like so many other aspects of SONAR, can be customized so in this article, I am going to show you how to customize the PRV Tools in your SONAR and show you how I set up mine.

Editing the PRV Tools

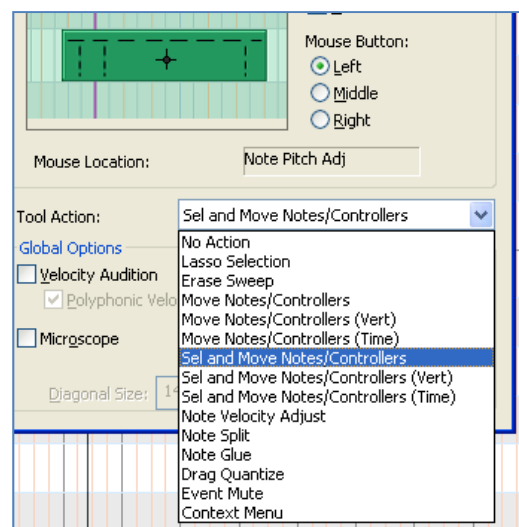
From the Menu, select OPTIONS, PRV TOOL CONFIGURATION. You will see the following screen. Ensure that the PRV Tool 1 (Select) is displayed in the Tool box.

Fig. 1



The green rectangle in the Context Screen represents a MIDI note on the PRV Editor Screen. The dotted lines depict how a MIDI note is divided up into separate regions where a MIDI edit command can be assigned. The black cross indicates which region you have selected to assign a MIDI command to. In this example, I have selected the “Note Pitch Adj” as the Mouse Location and the Tool Action for the Left Mouse Button with no Modifier Keys (Ctrl, Shift or ALT) selected is “Sel and Move Notes / Controllers”. By clicking on the Tool Action selection you can change this MIDI command to perform a different task.

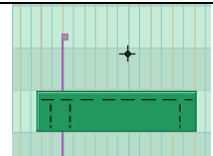
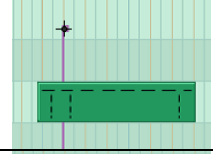
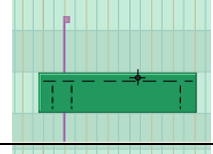
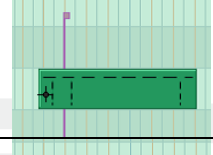
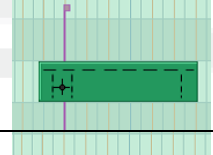
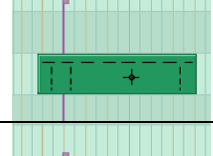

Fig. 2



For any mouse button / modifier key combination at any region of the MIDI Note (as well as the light green area called “Nowhere” or the red Controller Line) you can assign any of the commands listed in fig. 2.

My PRV Setup

I wanted to create a streamlined Select Tool which contained all the MIDI creation and editing tools I needed so that I didn't have to select the Draw or Erase Tool. Nor did I want to use any Modifier Keys so the objective was to arrange all the commands I required to the Left, Middle or Right Mouse Buttons in an intuitive manner. The table below shows you how I mapped out my commands;

	Left	Middle	Right
	Lasso	Erase Sweep	Paint Notes
	Select & Move Notes / Controllers		
	Adjust Velocity	Note Split	Context Menu
	Slip Start	Note Split	Drag Quantise
	Select and Move	Note Split	Select and Move Time
	Select and Move Vertical	Note Split	Event Mute
	Slip End	Note Split	Note Glue

Click this link to watch a short Video on how customizing your PRV Settings can improve your workflow.

<http://www.youtube.com/watch?v=Nyeru7Gfnbc>

Make sure you save your changes by overwriting the "Default Settings" title in the Preset box with a name of your own choice and clicking the Disk icon. Your changes will be the new default settings the next time you edit in PRV Mode.