

Band in a Box Introductory Tutorial



Getting to know the main screen

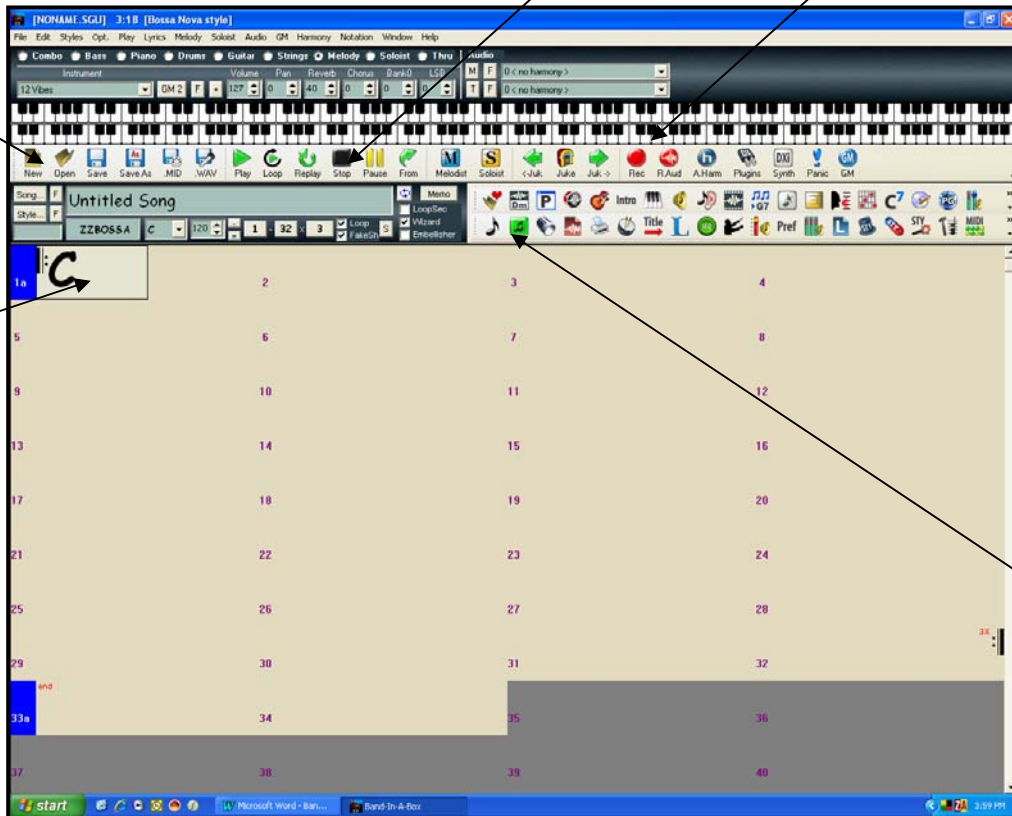
Click here to stop recording

Click here to start recording.

Click here to open a song

Click here to enter the chords

Click here to view the notation



Playing back a song

Click on the Icon marked Open and then navigate to tutorial songs.
Open the file named Desafinado and click OK.
Click on the Play icon and listen to the song.

Changing styles (and auditioning styles)

You will see that the song has a Bossa style.
Click on the Style icon located at the far left of the screen.
This opens the Select Style dialogue box.
Select All from the left hand column.
To audition a style, either double click on the style or click on Preview at the top of the page.
When you have selected a style that you like, click on OK.
Try a few different styles.
If a warning box appears on your screen asking if you would like to either reduce or expand the chord durations, click No.

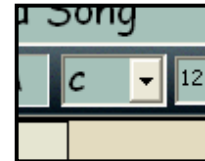
Changing tempo

To change the tempo of a song, click on the arrows next to the Tempo and adjust up or down. (Shortcut here is to use the Shift key and the][keys.) Use the Tap Tempo function just to the right of this box to set a tempo tapping the 'space bar'



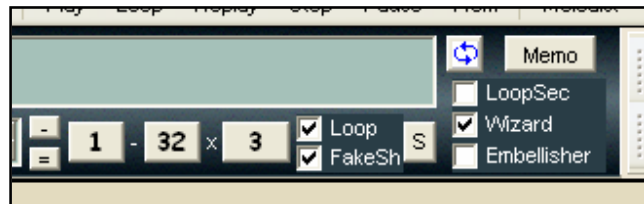
Changing Key Signature

No matter how complex the key signature, Band in a box can handle it. It will be entered in the field shown in the main screen. Click on the Key Signature window next to the tempo window.



Adjusting the length of your song

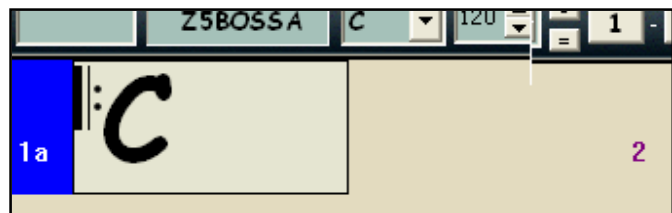
Band in a Box defaults to a song of length 32 bars with 3 choruses. Clicking in the box with the number 32 and changing the end bar can alter this.



Entering the chords and melody

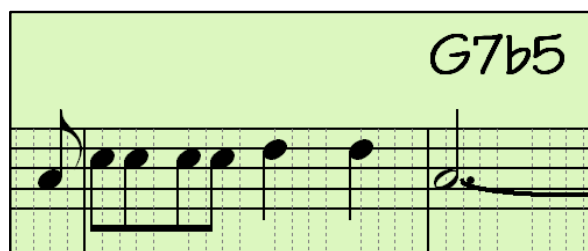
To enter a chord in a bar, make sure that the small grey rectangle is in the bar of your choice. Select the chord by pressing the appropriate key on your QWERTY keyboard eg C for C major. C minor for C minor, and so on.

The list of available chords is set out on a separate sheet also available at the Intelliware website.



Chord builder

To enter and/audition a chord or to build your own chord, use your right mouse icon at the bar where you wish to enter the chord and select Chord Builder.



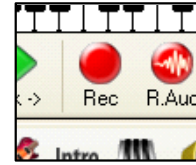
Entering the melody

This can be done either in real time using the metronome and a midi keyboard (preferred method) or by opening the notation window and placing the notes on the staves.

Entering the melody in Real Time.

Make sure that your midi keyboard is connected to the computer and that Band in a Box is receiving the note information. This can be seen on the 'on screen' keyboard.

Click on the Record icon (the red icon marked with Rec).



A box will appear asking you a couple of questions about how and where you wish to make your recording.

Select Start of Song and press Record. You will hear 2 bars count in and then you can start recording your melody. If you make a mistake, don't worry, as you will be prompted again when you press the Stop button as to whether you wish to 'keep' your recording.

Enjoy this part of Band in a Box.

If your timing is a little out, then you can 'quantise your recording or even create a 'human' feel'. Go to the Edit Menu and select Melody and go to Edit Melody.

Entering the melody using the notation window.

Click on the Notation icon and it will take you to the Notation Editor, so you can input the melody. Once the editor opens, click on the little [N] icon. This makes the notation editable. You will find the chords that you entered into the spreadsheet are in place above the staff, so you can use these as a guide

So now all you have to do is click the notes onto the notation staff

As you can see, Band in a Box has divided each measure into four beats, and each beat into sub-beats. It is a smart program and knows how much music a measure will hold. Just click on the line where the next note goes and it will take care of you.

If you were to click on C instead of B in the first beat, just click on B and it will correct it. You can also drag a note up or down or left or right by clicking on it and dragging it. Very slick.

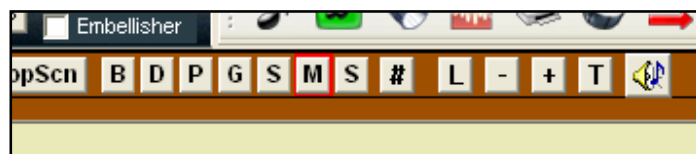
If you want to get rid of it and start over, right-click on the note and a dialogue will open that will let you delete. If you want to erase a whole bunch, there is a selection on the Edit menu that will let you erase any number of measures. You can specify what you want erased as well, melody, chords, solo or whatever

Swing notation breaks each beat up into three - not four. This allows one to use triplets with ease.

Notation window

To view the notation, click on the Musical Note in the centre of the main screen. Then click on any of the icons marked

P Piano
D Drums
B Bass
G Guitar
S Strings
M Melody
S Soloist.



Note that Band in a Box will pre select the instruments based on your selected style.

Changing style within a song

To change a style at a particular bar, right click in that bar and select Bar Settings. Here you will find all of your options.

Adding fills

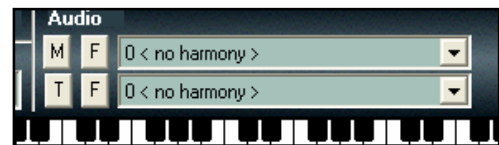
Click on the Bar number and it will change colour. Blue means that there will be a 'fill' and then continue with the same style. Green indicates that there will be a fill and the style will be enhanced from that point.

Chord detection

If you play a chord and do not know the name of that chord, Band in a Box will detect the chord. Go to the Window menu and scroll down to Midi Chord detection.

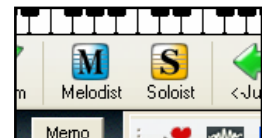
Adding a harmony to a melody

To add a harmony to your melody, go to the top of the page and click on the M and select a harmony.



Using the melodist and soloist functions

If you would like Band in a Box to create a melody line or a soloist track, click on the M or S icon on the main screen and follow the prompts.



Muting and soloing parts as well as adjusting instrument volumes

At the top of the main screen, you will see a number of buttons marked combo, bass, piano, etc. To adjust the volume or effect for each of these instruments, click on the button and adjust the value directly below the button. To mute a part, right click on it.



Entering stop chords

These are entered by placing a 'full stop' after entering the chord name

Entering chords with muted instruments

These are entered by typing the required chord, followed by a dot, and selecting the letters of the instruments to be heard. E.g. To enter a chord with only bass and drums, it should be like this C.b,d

Saving as a BB song/Midi file/Audio file

To save your song as a Band in a Box file, select the Save icon.

To save your song as a midi file so that it can be imported into another music program like Sibelius, select the midi icon.

To save your song as an audio file, select the Save as Wave icon

Count in and metronome functions

Explore the preferences section. Here you will find a broad range of 'Educational' options for viewing and listening to the metronome.